



## Connect Tūhono

We provide fully funded internet for all state and state-integrated schools and kura across Aotearoa. Our internet is fast, safe and includes uncapped data - meaning schools can use as much as they need. We also provide a secure Wi-Fi connection throughout the kura.



## Protect Tiaki

Access a suite of safety and security services to help protect you and your ākonga online. We combine our security solutions with people power and expertise to give you the confidence you need.

### How we protect



## Support Tautoko

Whether a quick query or a tricky technical one, we have the right support ready to help you. You can choose how you'd like to access information and assistance - it's all about what works best for you.

## Safety & Security Solutions

Our safety and security solutions will help keep your kura, kaiako and ākonga safe online. We make it simple to have a baseline level of protection against online threats and inappropriate content. We do this through our Safe & Secure Internet, which comes with the following elements and a number of recommended settings:

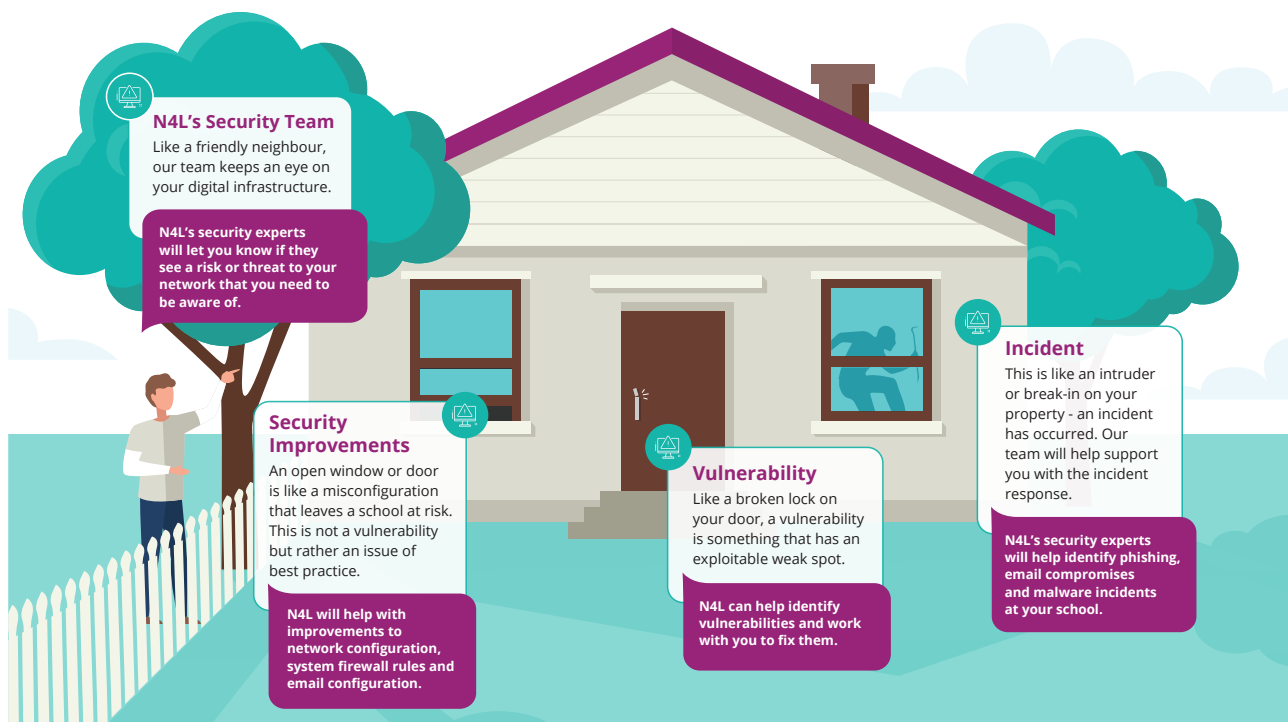
- Web Filtering
- Firewall
- DNS Threat Protection (+SafeSearch)
- DDoS Protection

### To protect ākonga online further, you can choose these add-ons:

- Secure Access
- Mail Relay
- Remote Access

## Cybersecurity Services

Our dedicated security team proactively monitor networks, provide notifications of threats and vulnerabilities, identify improvements and work with you to help resolve or mitigate incidents.

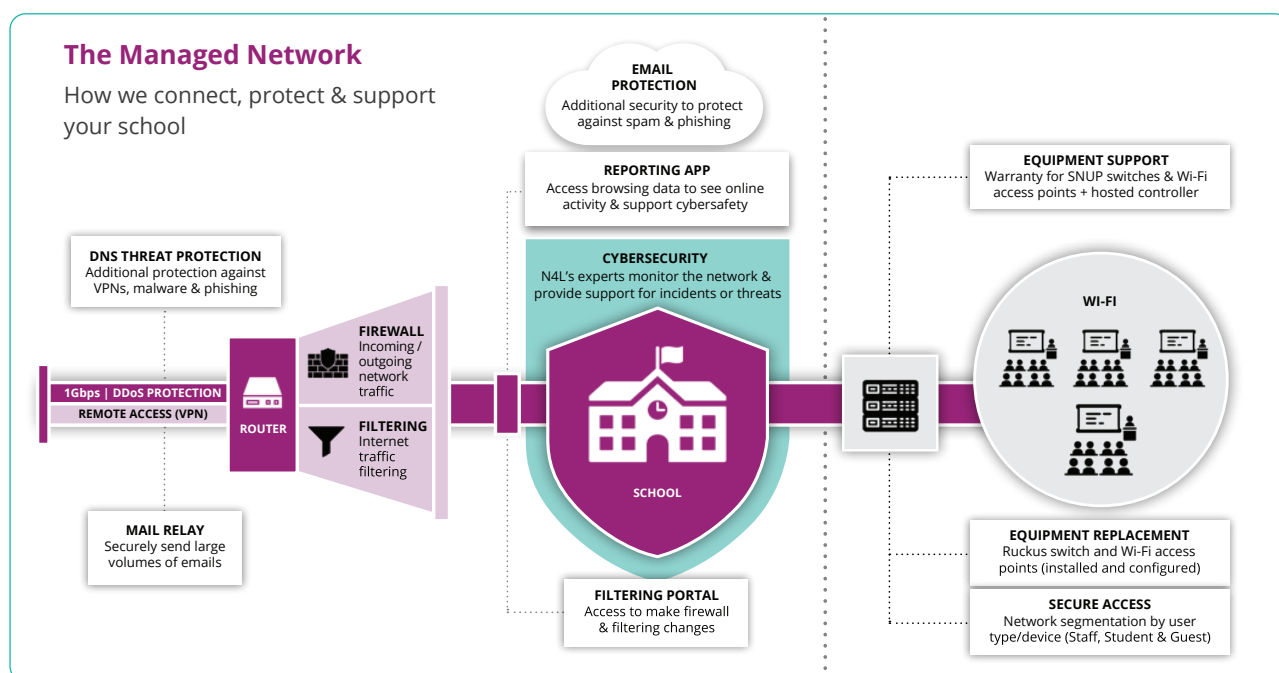


While we're here to support you, it's super important that you also have broader security measures in place. That's why we're working with the Ministry of Education to help kura understand what they can do to improve their cybersecurity posture and better protect against online threats. Let's work together to help keep your school safe.



## What more can I do to protect my school?

- ✓ Check your school is part of the Ministry of Education's [Risk Management Scheme](#). This includes cybersecurity insurance.
- ✓ Sign up to Email Protection. We'll be in touch soon about this additional layer of email security, which enhances your protection against spam and phishing attacks. It's fully funded by the Ministry of Education.
- ✓ Ensure our Safe & Secure [recommended settings](#) are enabled to provide a baseline level of protection. If you'd like to check your settings, please get in touch.
- ✓ Follow [CERT NZ's advice](#) on other important actions you can implement in your day-to-day environment.
- ✓ Check out the [cybersecurity tips](#) from the Ministry of Education.



Ready to chat?

Our Customer Support team is available  
Monday – Friday, 8:00am to 5:00pm.  
Call 0800 LEARNING (532 764)  
or email us at [support@n4l.co.nz](mailto:support@n4l.co.nz)



Want to learn more?

[n4l.co.nz/protect](https://n4l.co.nz/protect)