



FortiClient Remote Access - Installing version 6.2

This article outlines how to install FortiClient version 6.2 on devices, which is the latest supported FortiClient version that is compatible with the current FortiGate firewalls (which run FortiOS 6.0 firmware).

This guidance also shows existing FortiClient users running version 6.0.9 how to upgrade to the latest 6.2 version.

- *FortiClient is only supported by Windows 10 PCs.*
- *This guidance is for individual upgrades of each device that FortiClient is installed on. If you'd like to automate or mass update all users' software at once, such as active directory remote install, please contact your IT provider.*

Downloading FortiClient version 6.2

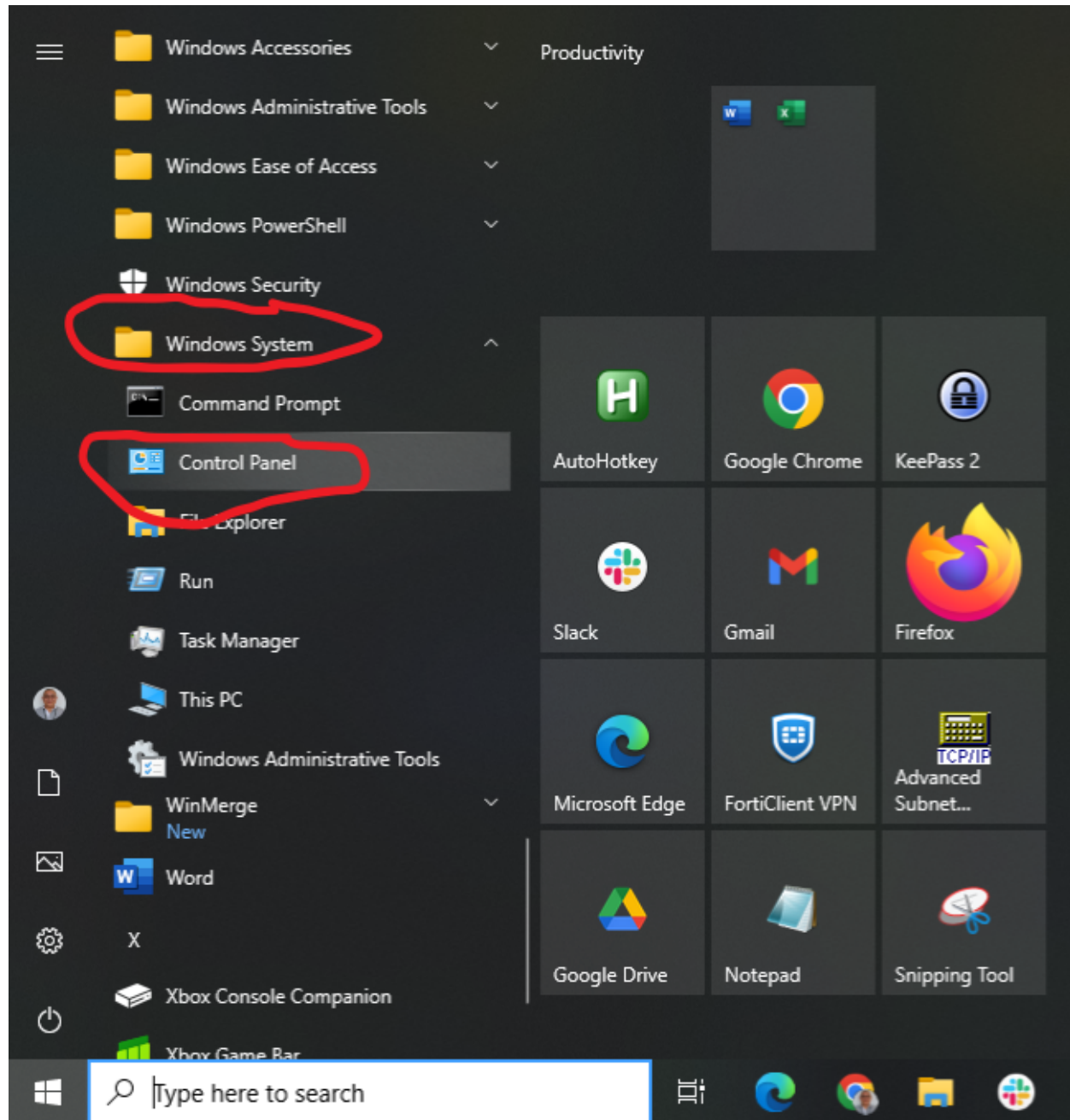
1. Download the FortiClient software [here](#).
2. Save it to a local drive on your PC.

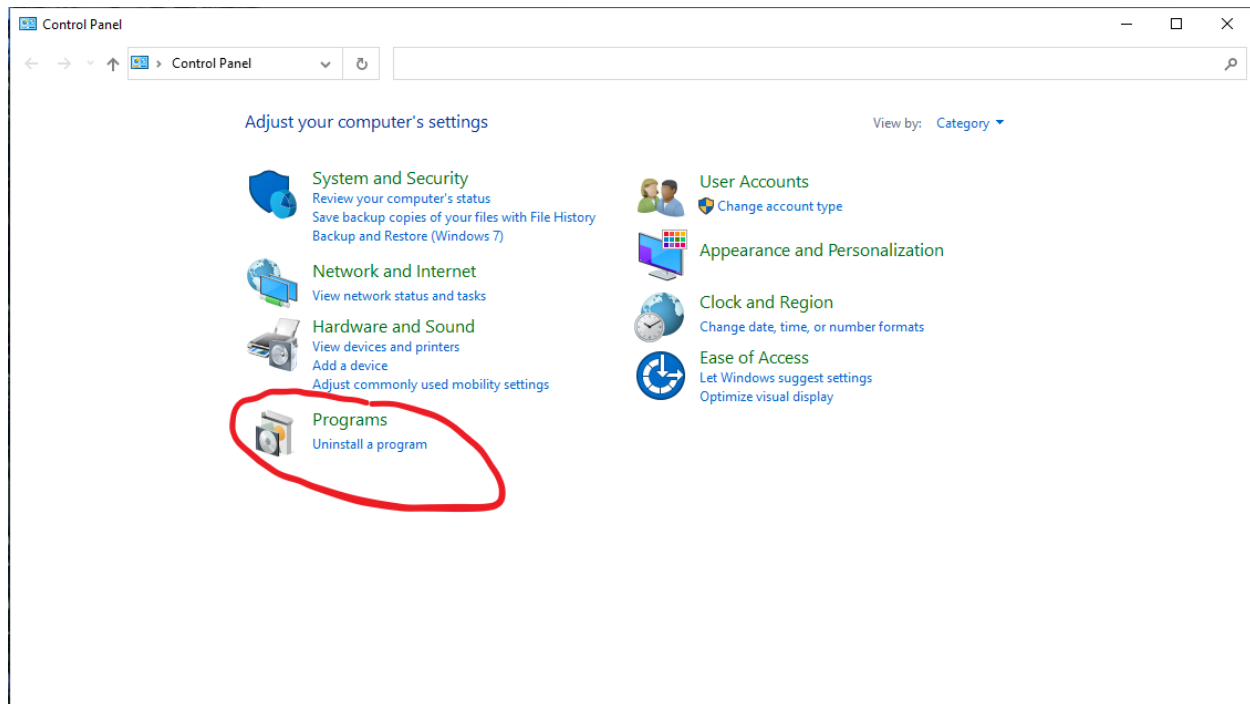
For existing FortiClient users, please follow this guidance from the 'Uninstalling FortiClient version 6.0.9' step below.

If you don't have a previous version of FortiClient installed on your device, please skip to the 'Installing FortiClient version 6.2' on page 4.

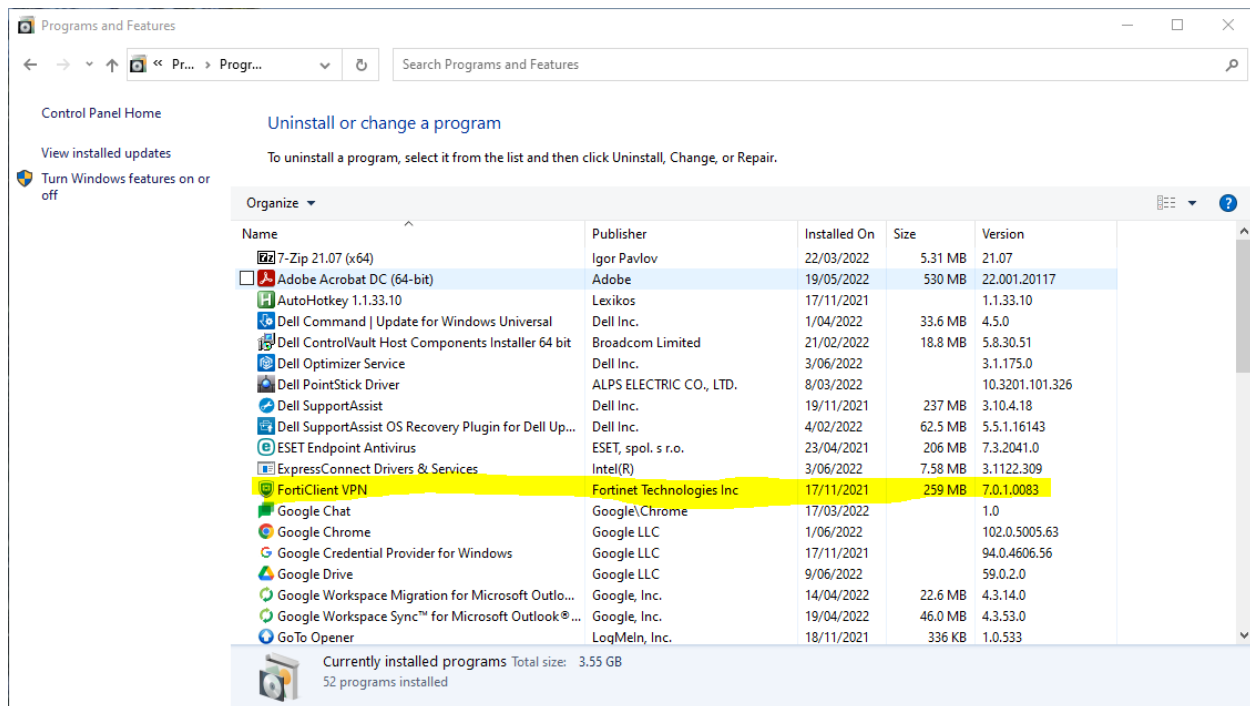
Uninstalling FortiClient version 6.0.9

1. Uninstall the old version of FortiClient by clicking on **Start** → **Windows System** → **Control Panel** → **Programs** → **Uninstall a program**.





2. Locate the **FortiClient VPN** application and click on it.

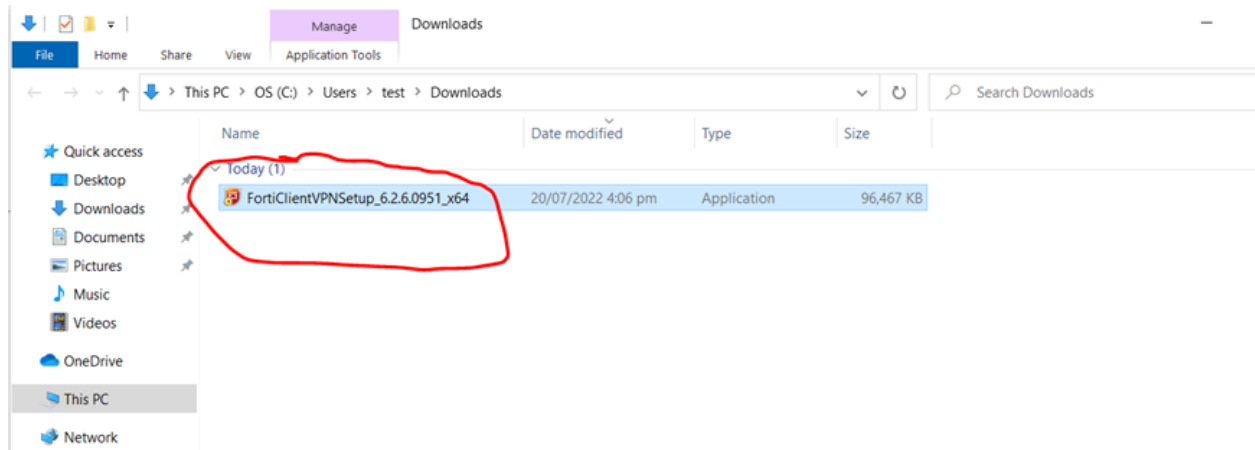


3. Follow the instructions to uninstall FortiClient.

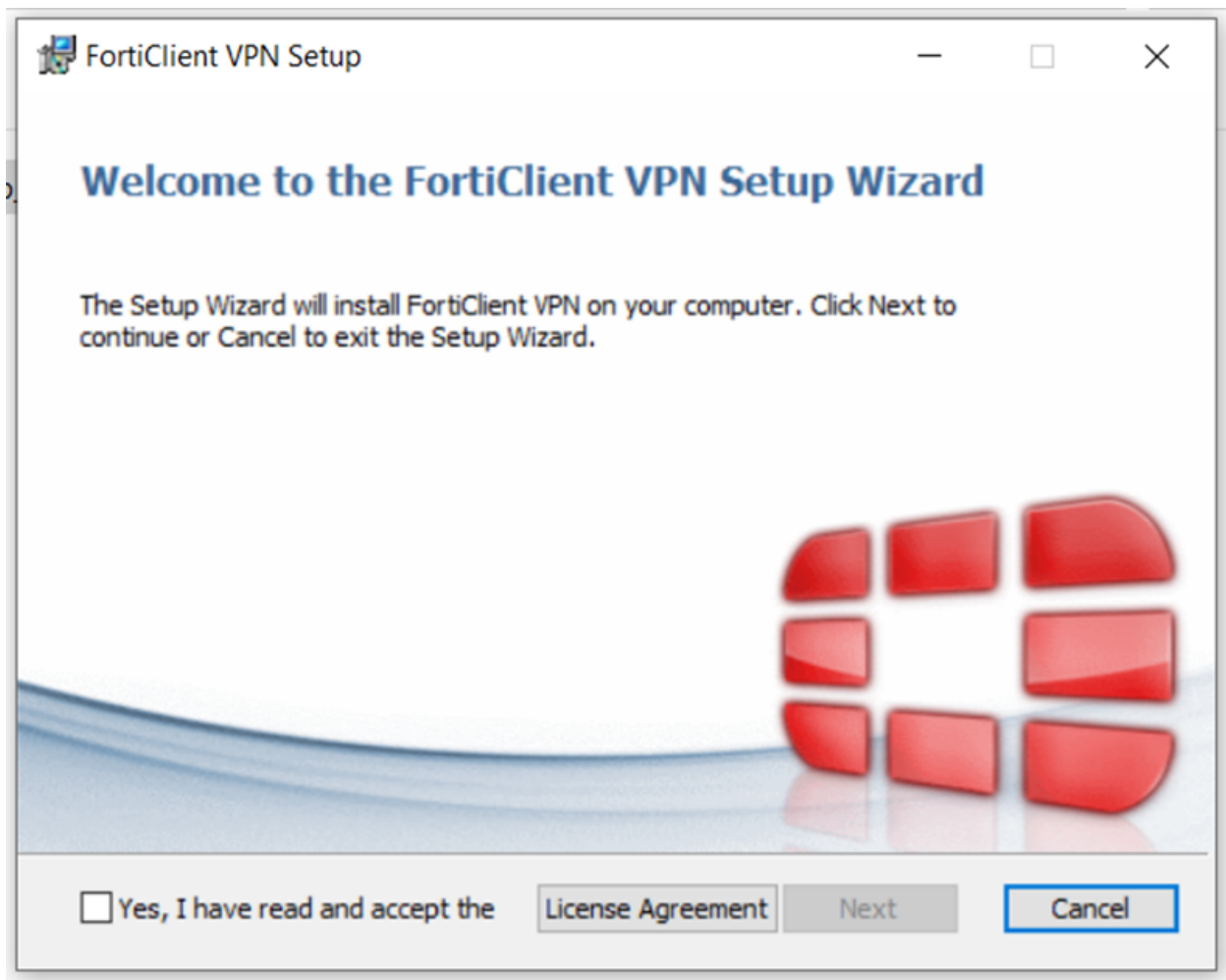
Note some users may not have the login rights (privilege levels) to uninstall and install software on their computer. If this is the case, you'll need to contact your IT support.

Installing FortiClient version 6.2

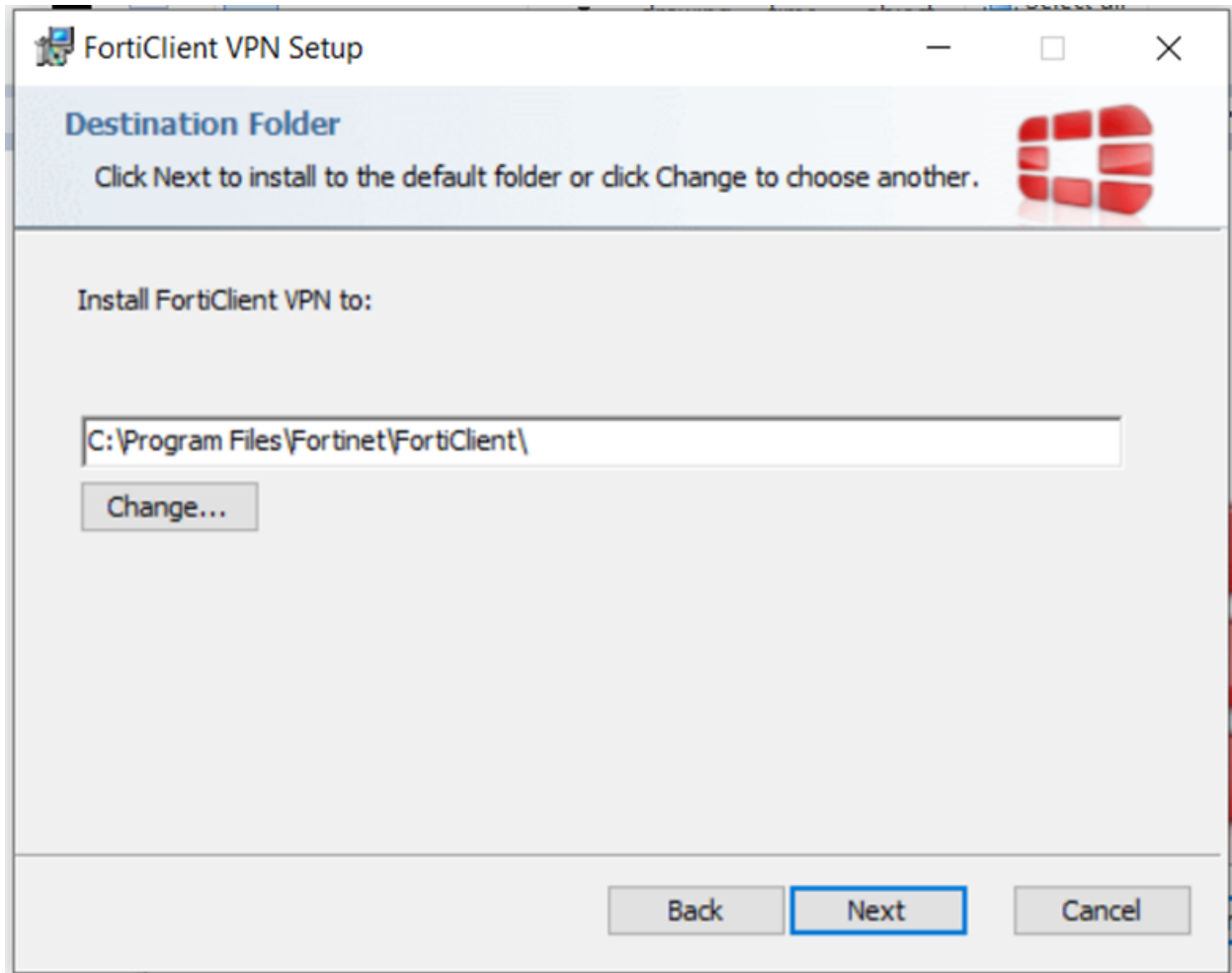
1. Locate the downloaded FortiClient 6.2 software.
2. Double-click on the file to begin the installation.



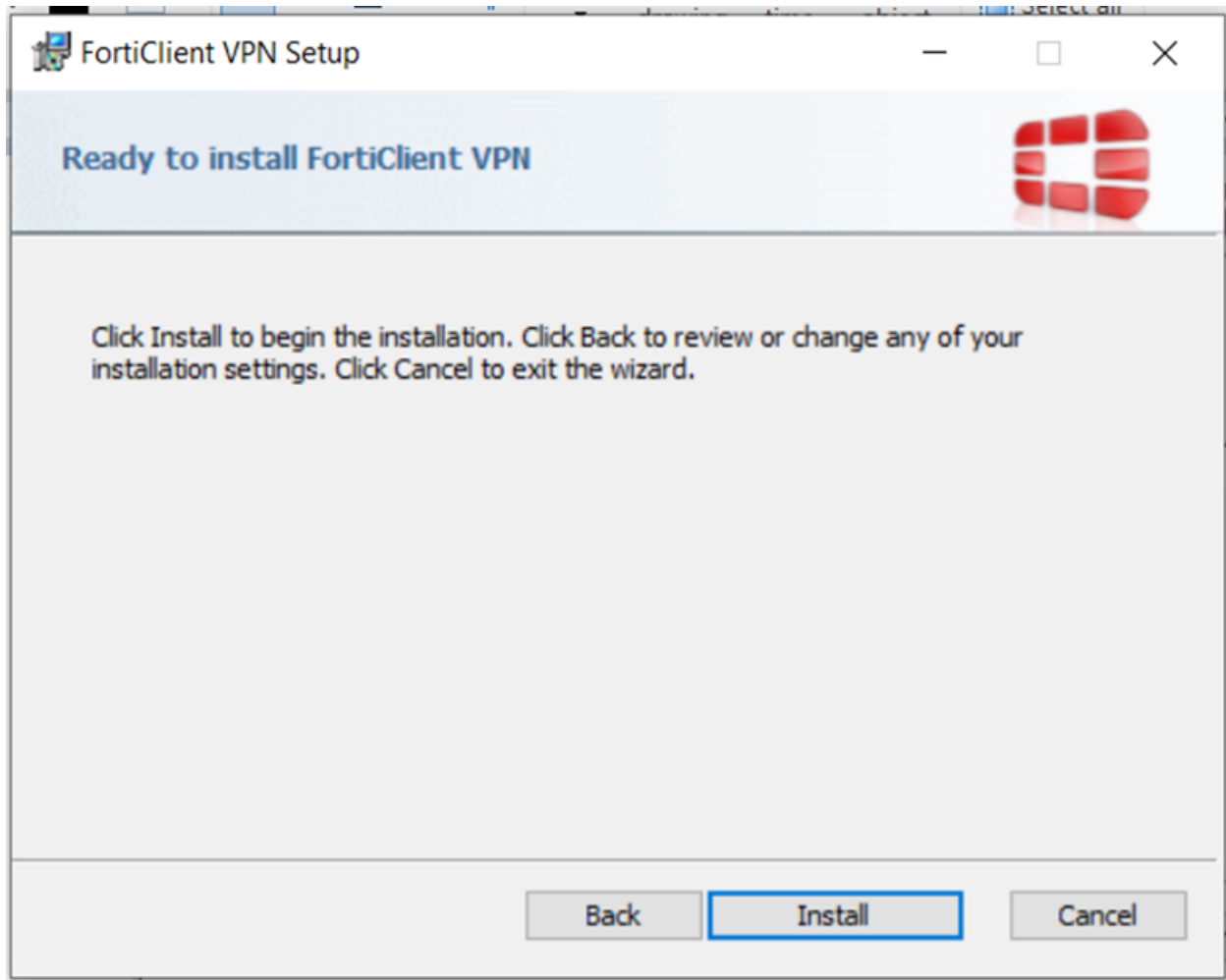
3. Check ***"Yes, I have read and accept the License Agreement"***, then click **Next**.



4. Leave the file location as the default - **c:\Program Files\Fortinet\Forticlient** and click **Next**.



5. Click **Install** and then **Finish**.



FortiClient VPN Setup

Completed the FortiClient VPN Setup Wizard

Click the Finish button to exit the Setup Wizard.

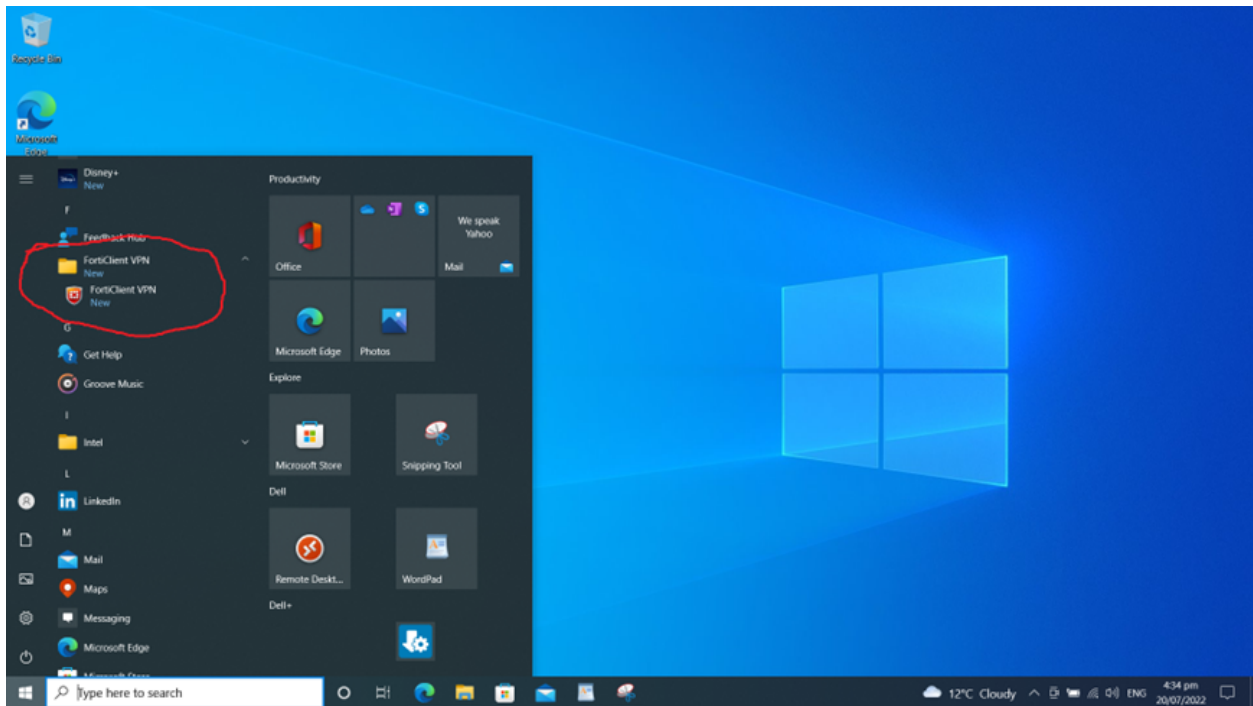


Back

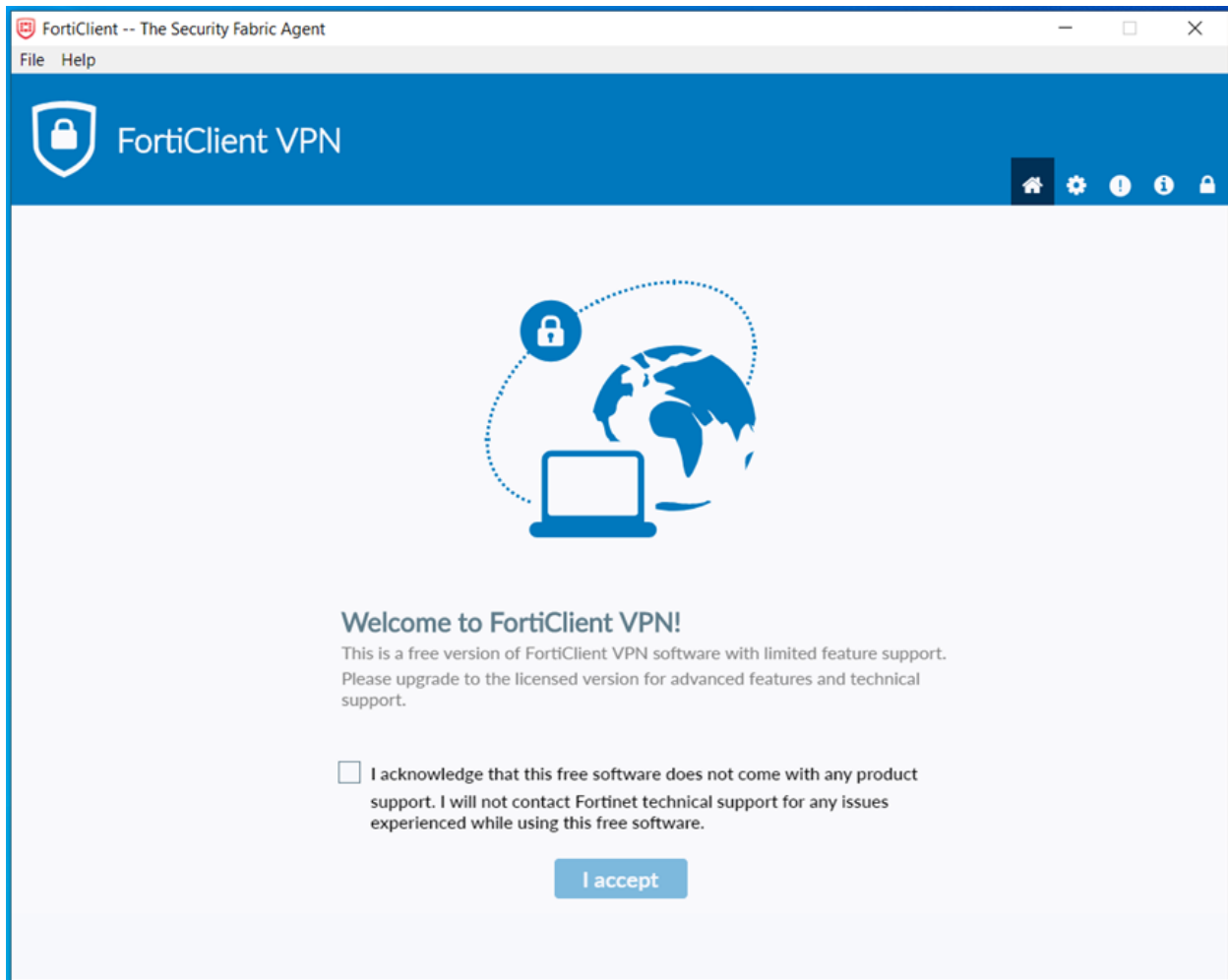
Finish

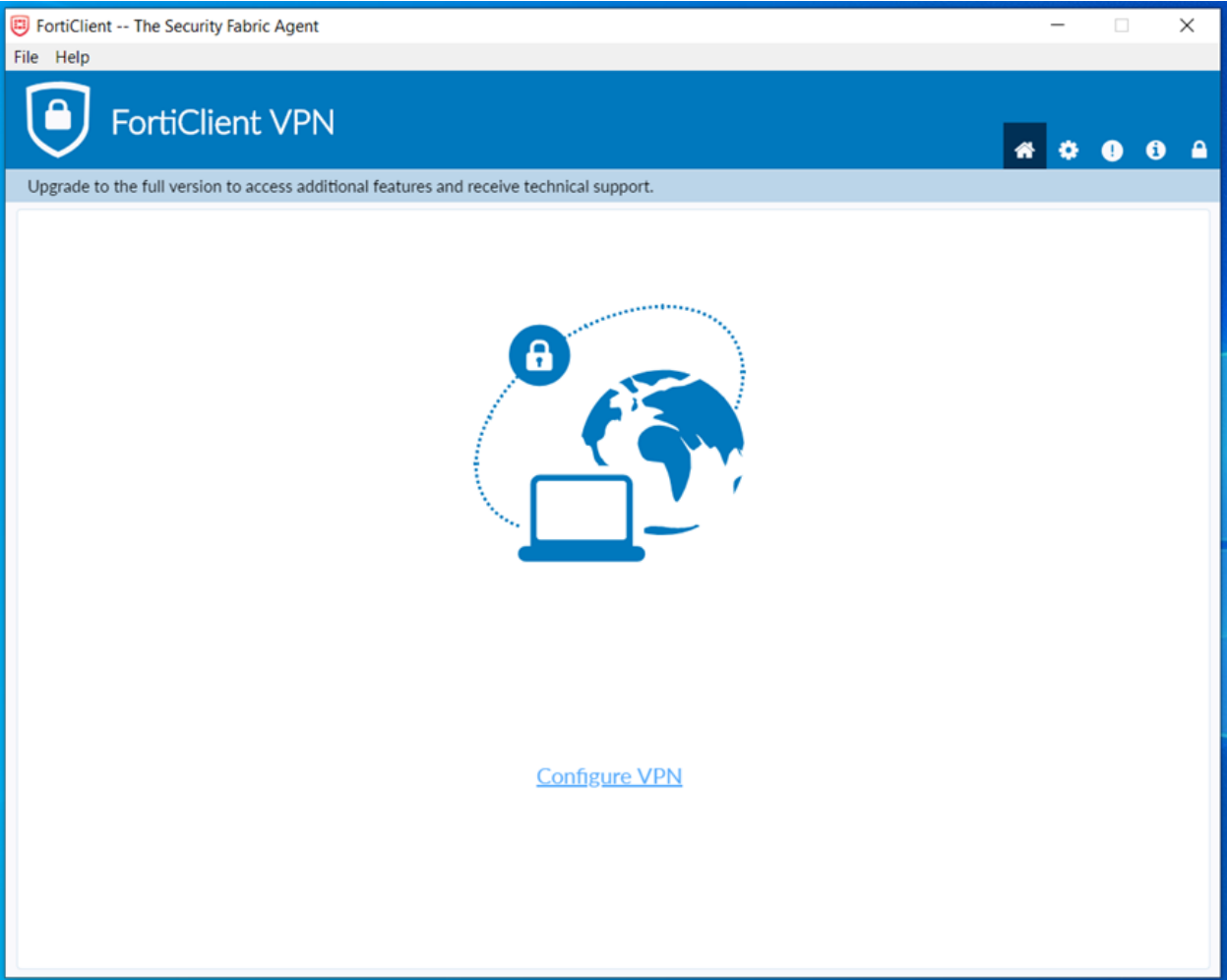
Cancel

6. Click **Start** and find the newly installed software - click on it to start the application.



7. Check the acknowledgement box then click **I accept** → **Configure VPN**.





8. Under **New VPN connection**, enter the following information:

FortiClient -- The Security Fabric Agent

File Help

FortiClient VPN

Upgrade to the full version to access additional features and receive technical support.

New VPN Connection

VPN: SSL-VPN IPsec VPN

Connection Name:

Description:

Remote Gateway:
[+Add Remote Gateway](#)

Authentication Method: Pre-shared key

Authentication (XAuth): ☐ Prompt on login ☒ Save login ☐ Disable

Username:

— Advanced Settings

+ VPN Settings

+ Phase 1

+ Phase 2

Configuration item	Setting	Notes
VPN	IPSEC VPN	
Connection name	VPN-to-school	Enter a meaningful name to identify the connection
Description	VPN to school N4L Firewall	
Remote gateway	IP address of the firewall to connect to, e.g. 192.168.1.1	To be provided by N4L
Authentication method	Pre-shared key	Pre-shared key to be provided by N4L

	In the box below enter the pre-shared key to use	
Authentication (XAuth)	<i>Save login</i>	
Username	Enter username	Provided by the school IT admin if using active directory for authentication. Otherwise, N4L will provide the username if using local firewall authentication

9. Under **Advanced settings** → **VPN settings**, select the following options:

— Advanced Settings

— VPN Settings

IKE ☒ Version 1 ☐ Version 2 (not available with the free client)

Mode ☐ Main ☒ Aggressive

Options ☒ Mode Config ☐ Manually Set ☐ DHCP over IPsec

10. Under **Advanced settings** → **Phase 1**, enter the following information:

— Advanced Settings

+ VPN Settings

— Phase 1

IKE Proposal

Encryption Authentication

Encryption Authentication

DH Group ☐ 1 ☐ 2 ☐ 5 ☐ 14 ☐ 15

☒ 16 ☐ 17 ☐ 18 ☐ 19 ☐ 20

Key Life sec

Local ID

☒ Dead Peer Detection

☒ NAT Traversal

11. Under **Advanced settings** → **Phase 2**, enter the following information:

Advanced Settings

VPN Settings

Phase 1

Phase 2

IKE Proposal

EncryptionAES256

AuthenticationSHA256

EncryptionAES256

AuthenticationSHA512

Key Life

☒43200Seconds

☐5120KBytes

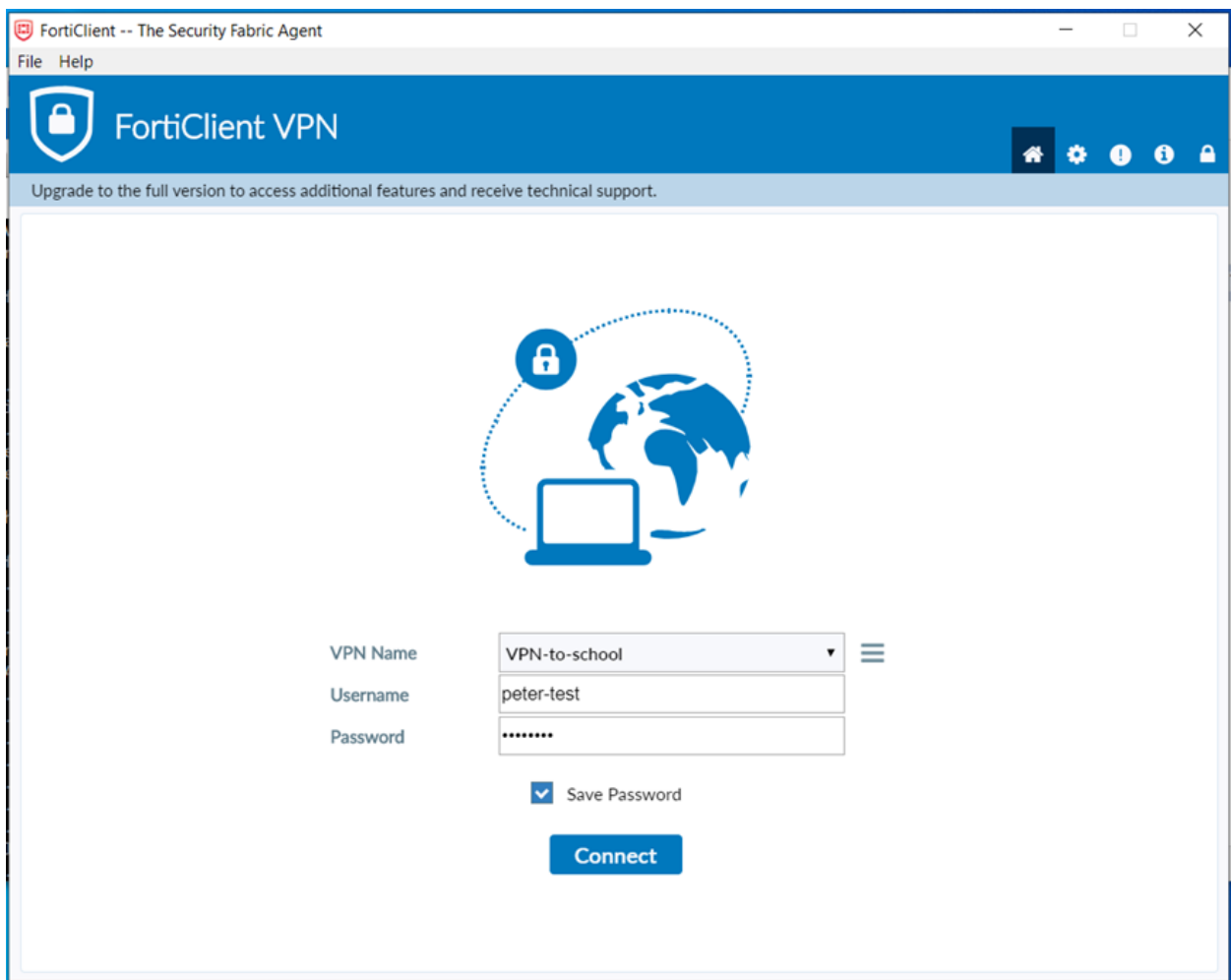
☒Enable Replay Detection

☒Enable Perfect Forward Secrecy (PFS)

DH Group16

Testing the VPN connection

1. Open the FortiClient application.
2. Enter the following information:
 - If you have multiple connections, check you have the correct VPN profile name (VPN-to-school).
 - Enter username if it doesn't automatically appear.
 - Enter password
 - Check the **Save password** box
3. Click **Connect**.



4. A message will confirm whether the connection has been successfully established - note that depending on the speed of your internet connection it may take a number of seconds to connect. You may need to wait around 30 seconds to 1 minute (especially if it's the first time the connection is established).