



Help protect your school online

Access a suite of safety and security services designed to protect kaiako and ākonga

Safe & Secure Internet

Safe & Secure Internet makes it simple for schools or kura to have a baseline level of online protection. It's a suite of 5 services with recommended settings, designed to help keep your ākonga safe and your network more secure. We also monitor these settings and can let you know if something changes that could put your school at risk.



Firewall



Web Filtering



DDoS Protection



DNS Threat Protection



SafeSearch

Recommended settings

As part of our Safe & Secure Internet service we encourage schools to have recommended settings in place. We can then monitor these settings to make sure nothing has changed with the firewall settings or block filtering categories, and if DNS Threat Protection is switched on.

These settings are supported by our friends at [Netsafe](#) and [CERT NZ](#), but you can decide the settings that best suit the needs of your school. To learn more about these settings head to n4l.co.nz/protect, or if you'd like to discuss your settings with us please get in touch.



Web Filtering with all default categories blocked



Firewall with specific settings applied



DNS Threat Protection & SafeSearch enabled

Email Protection

For enhanced security to help protect schools and kura from the increasing number of email-based cyber threats, we offer an industry-leading inbound Email Protection solution. It's fully funded for eligible schools by the Ministry of Education and it works together with schools' existing Microsoft or Google email services:

247.2 million
Total inbound emails



149.9 million
Emails blocked by Email Protection



94.3 million
Emails delivered to school's service



School's settings **block** further emails



Safe emails **delivered** to school users

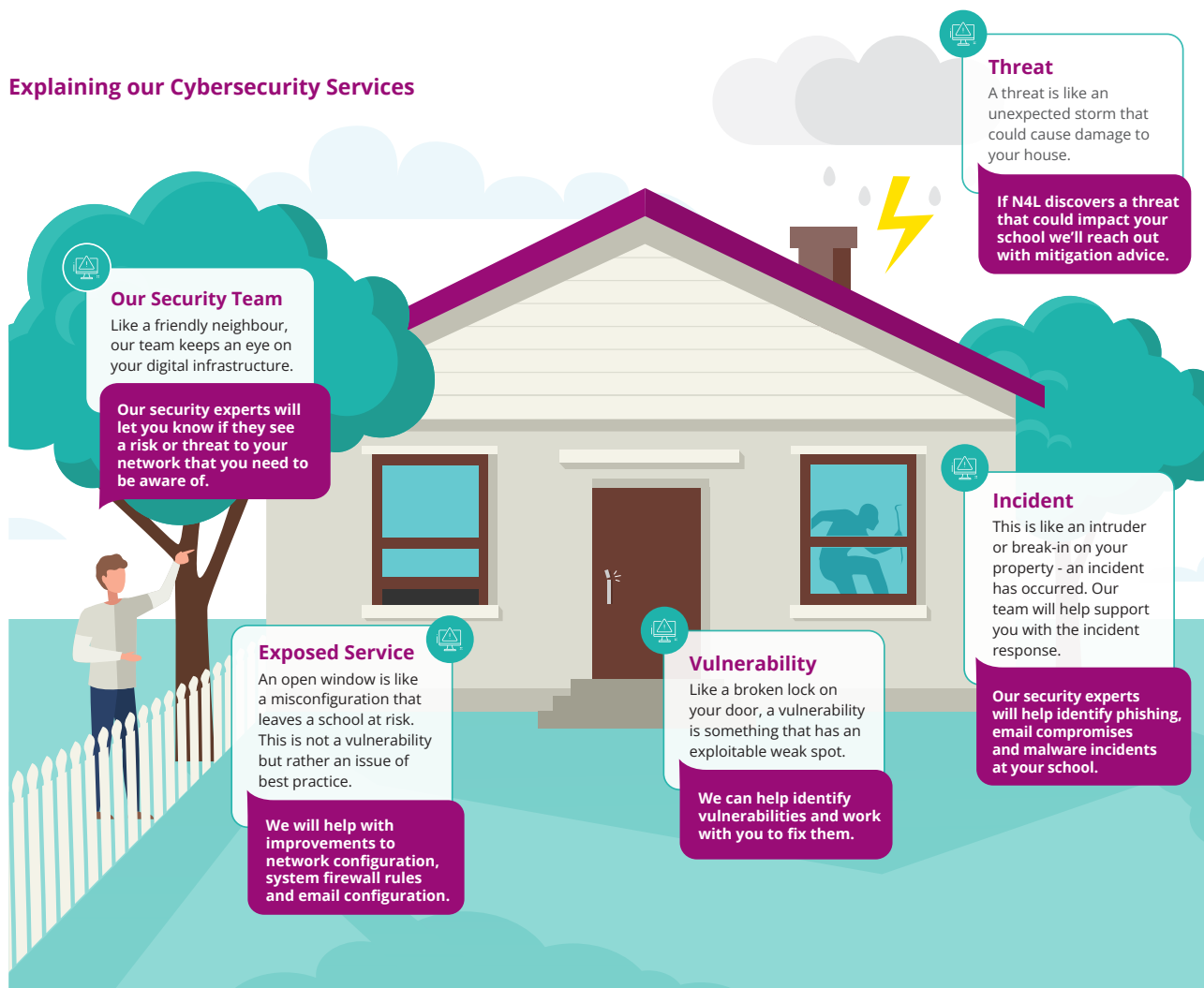


*Numbers above are based on emails received by users at ~1,500 schools over a single school term.

Cybersecurity Services

We proactively monitor the network and will let you know if we discover any cybersecurity risks or issues at your school. We'll provide expert guidance on what you need to do to reduce the risk of any identified threats and vulnerabilities, and support you to identify and remediate cybersecurity incidents.

Explaining our Cybersecurity Services



What more can I do to protect my school?

- ✓ Check your school is part of the Ministry of Education's [Risk Management Scheme](#). This includes cybersecurity insurance.
- ✓ Sign up to Email Protection. This is an additional layer of email security, which enhances your protection against spam and phishing attacks. It's fully funded by the Ministry of Education.
- ✓ Ensure our Safe & Secure [recommended settings](#) are enabled to provide a baseline level of protection. If you'd like to check your settings, please get in touch.
- ✓ Follow [CERT NZ's advice](#) on other important actions you can implement in your day-to-day environment.
- ✓ Check out the [cybersecurity tips](#) from the Ministry of Education.



Ready to chat?

Our Customer Support team is available Monday – Friday, 8:00am to 5:00pm. Call 0800 LEARNING (532 764) or email us at support@n4l.co.nz



Want to learn more?

n4l.co.nz/protect